

# Malan: A hot spot for Yellow Rust



**Excellent Phenotyping : Opportunity to collaborate with Molecular Breeding Programmes**



# Malan: A hot spot for Powdery Mildew



**Excellent phenotyping facility- Field/ controlled conditions**

**Opportunity to collaborate with Molecular Breeding Programmes**

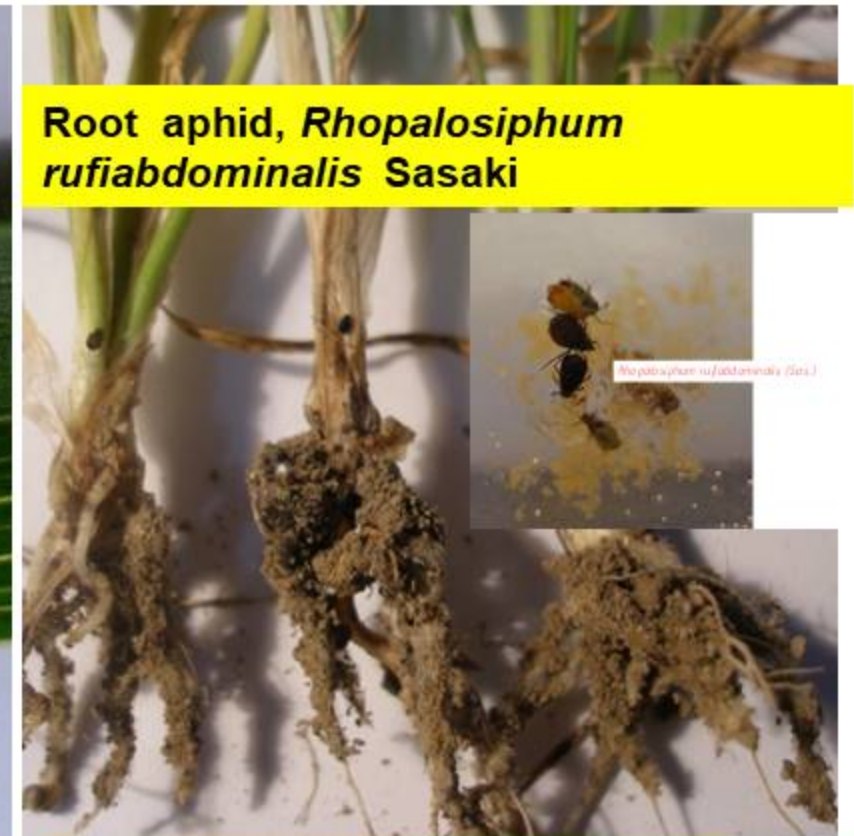


Wheat aphid, *Rhopalosiphum maidis* Fitch

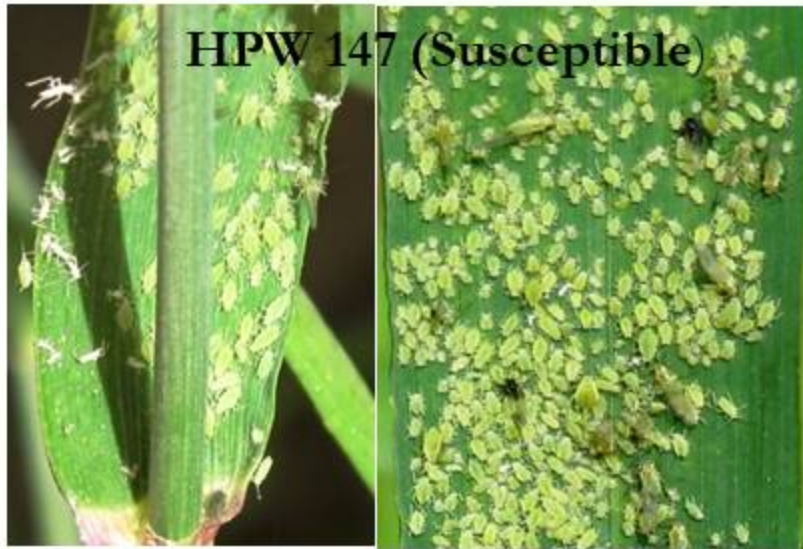


*Helicoverpa armigera* Hubner Larvae

Root aphid, *Rhopalosiphum rufiabdominalis* Sasaki



Root-knot Nematode, *Meloidogyne graminicola* Golden & Birchfield)



## Screening of Wheat for Nematode and Aphid Resistance

HPW 314 (Resistant)

